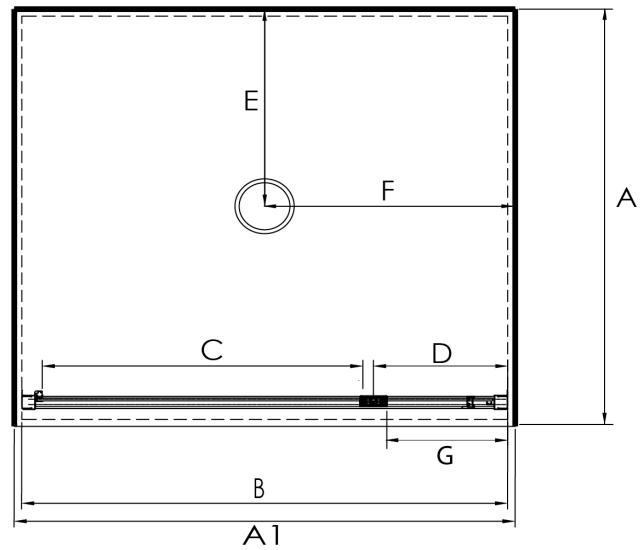


RECTANGULAR ALCOVE PIVOT DOOR SHOWERS



Pictured above - Capricorn 900x1200x900 alcove white pivot door moulded wall
SKU 248520



DESCRIPTION

The Stellar rectangular alcove pivot door range of showers can be purchased as a complete shower cubicle including acrylic tray, wall liner and door pack.

The door pack and tray can also be purchased as individual items for a tiled floor and /or tiled wall installation.

Door is reversible - flip to fit.

FEATURES

- Low profile tray with 40mm upstand
- 1950mm high glass
- Total OVERALL height 2020mm
- Removeable drip strip and gutter
- Pivot door in a modern 1 piece design with 6mm safety Glass
- Magnetic strip on closing edge of door
- Metal trim on base of glass return
- Quality alloy hardware

LEGEND

Dimension	Description	Shower Size					
		760x900 900mm Door	900 x 760 760mm Door	1200x800 1200mm Door	900x1200 900mm Door	1200x900 1200mm Door	1200x1000 1200mm Door
A	Tray External Dimension Depth	760mm	900mm	800mm	1200mm	900mm	1000mm
A1	Tray External Dimension Width	900mm	760mm	1200mm	900mm	1200mm	1200mm
B	Door Frame Outer Dimension	875mm	735mm	1175mm	875mm	1175mm	1175mm
C	Door Opening Dimension	640mm	550mm	640mm	640mm	640mm	640mm
D	Centre of Pivot Block to Liner	138mm	88mm	410mm	138mm	410mm	410mm
E	Waste position Depth	380mm	450mm	250mm	250mm	250mm	250mm
F	Waste Position Width	450mm	380mm	600mm	450mm	600mm	600mm
G	Small Glass Return Panel Width	N/A	N/A	393mm	N/A	393mm	393mm

ORDERING CODES

Product Description	SKU CODE					
	760x900x760 900mm Door	900x760x900 760mm Door	800x1200x800 1200mm Door	1200x900x1200 900mm Door	900x1200x900 1200mm Door	1000x1200x1000 1200mm Door
Alcove 3 sided Flat Wall White Pivot Door	248515	248555	S8X12X8CAPWHFW	S12X9X12CAPWHFW	248519	S1X12X1CAPWHFW
Alcove 3 sided Flat Wall Silva Pivot Door	248517	248557	S8X12X8CAPSIFW	S12X9X12ACAPSIFW	248521	S1X12X1CAPSIFW
Alcove 3 sided Flat Wall Black Pivot Door	364963	S9X7X9LEOBLFW	N/A	S12X9X12CAPBLFW	N/A	N/A
Alcove 3 sided Moulded Back Wall White Pivot Door	248516	N/A	S8X12X8CAPWHMW	N/A	248520	N/A
Alcove 3 sided Moulded Back Wall Silva Pivot Door	248518	N/A	S8X12X8CAPSIMW	N/A	248522	N/A
Alcove 3 sided Moulded Back Wall Black Pivot Door	364964	N/A	N/A	N/A	N/A	N/A
Flat Alcove Tray Only	TFS7X9X7ALCCW	TFS9X7X9ALCCW	TFS8X12X8ALCRCW	TFS12X9X12ALCRCW	TFS9X12X9ALCRCW	TFS1X12X1ALCRCW
Flat Alcove Wall Liner Only White 1950mm High	LB7X9X7FW3S195	LB9X7X9FW3S195	LB8X12X8FW3S195	LB12X9X12FW3S195	LB9X12X9FW3S195	LB1X12X1FW3S195
Moulded Back Wall / Wall Liner Only White 1950mm High	LB7X9X7MW3S195	LB9X7X9MW3S195	LB8X12X8MW3S195	N/A	LB9X12X9MW3S195	N/A
Pivot Door Only White (reversible opening)	D900WH195	D760WH195	D1200WH195	D900WH195	D1200WH195	D1200WH195
Pivot Door Only Silva (reversible opening)	D900SI195	D760SI195	D1200SI195	D900SI195	D1200SI195	D1200SI195
Pivot Door Only Black (reversible opening)	D900BL195	D760BL195	N/A	D900BL195	N/A	N/A

WARRANTY INFORMATION

All bathroomware products supplied by Fibre Systems carry our Quality Assurance and Product Warranty. We use the highest quality materials available and manufacture these in accordance with New Zealand specifications and requirements to ensure that all products are fit for the intended purpose for which they are designed. Our customer's peace of mind is of paramount importance to us.

Warranty Periods

Baths	10 years
Showers	10 years
Shower Screens and Doors	10 years
Silva and White Coatings	10 years
E-Line + Squareline + Dezine Showers	5 years
Black Coatings	5 years
Aquaknight Easy Clean Wastes	7 years
Accessories	2 years



Warranty Exclusions

The product must be installed according to the instructions supplied.
The water supply temperature applied to the product must not exceed 55 degrees Celsius.
All cleaning and cleaning products must be in accordance with our cleaning instructions and guidance.
Commercial Applications (where products are installed in a building where occupancy is via a commercial arrangement i.e. a rental property, hotel, hostel etc) are restricted to a 2 year warranty on all products.

CLEANING AND MAINTENANCE

Please refer to our cleaning instructions document for guidance, available on our website

In accordance with our continuous product development programs, Fibre Systems sizes and specifications outlined in these specifications are subject to change without notice.

Information detailed in this technical sheet represents the actual product available at the time of printing this sheet. For the latest version of this technical sheet please visit www.stellarshowers.co.nz or contact your nearest stockist to confirm any questions prior to purchase.