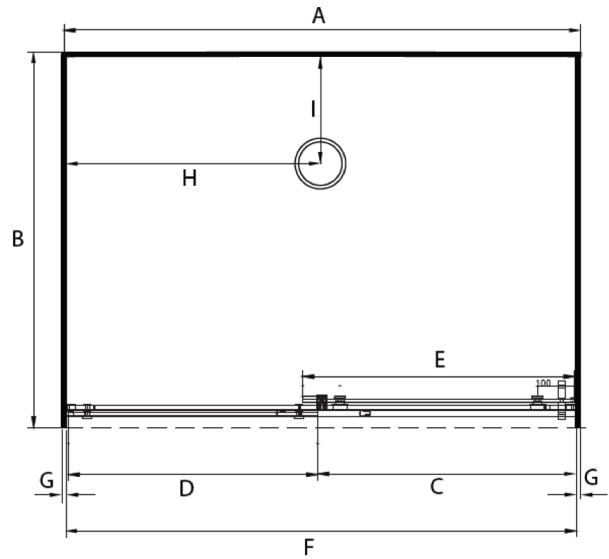


LUXURY FRAMELESS ALCOVE SHOWERS



Pictured Above - Stellar Luxury 1x12x1 Alcove Silva Door
Flat Wall Right Hand Opening Door
SKU 248559



DESCRIPTION

The Stellar Luxury Frameless Range of Alcove Showers can be purchased as a complete Shower Cubicle including Acrylic Tray, Wall Liner and Door pack.

The Door Pack can also be purchased as an individual item for a tiled floor and wall installation.

SEE TILE SHOWER LAYOUT FOR SETOUT DIMENSIONS

The Door is NOT reversible.

FEATURES

- Low profile tray with 40mm upstand
- 2000mm high glass 8mm Safety Glass
- Total OVERALL height 2060mm
- Door closes to finished wall
- Minimalistic extrusion allows adjustment to wall and floor
- No silicone joints required for glass
- High quality stainless / alloy fittings

LEGEND

Dimension	Description	Shower Size			
		800 x 1200 x 800	900 x 1200 x 900	1000 x 1200 x 1000	1000 x 1400 x 1000
A	Tray Width External Dimension	1200mm	1200mm	1200mm	1400mm
B	Tray Depth External Dimension	800mm	900mm	1000mm	1000mm
C	Door Opening Dimension +/- 10mm	580mm	580mm	580mm	680mm
D	Return Panel Dimension	570mm	570mm	570mm	670mm
E	Door Panel Dimension	630mm	630mm	630mm	730mm
F	Dimension between Wall Liner inner faces	1175mm	1175mm	1175mm	1375mm
G	Gib Board Liner Thickness +/-1.5mm	12.5mm	12.5mm	12.5mm	12.5mm
H	Centre Waste Position (Width from Framing)	600mm	600mm	600mm	700mm
I	Centre Waste Position (Depth from Framing)	250mm	250mm	250mm	250mm

ORDERING CODES

Product Description	SKU CODE			
	800 x 1200 x 800	900 x 1200 x 900	1000 x 1200 x 1000	1000 x 1400 x 1000
Complete Cubicle Silva Flat Wall Left Hand Opening Door	295545	244313	242922	242925
Complete Cubicle Silva Flat Wall Right Hand Opening Door	295547	248561	248559	248560
Complete Cubicle Black Flat Wall Left Hand Opening Door	318641	318643	318637	318639
Complete Cubicle Black Flat Wall Right Hand Opening Door	318642	318644	318638	318640
Tray Only Centre Rear Waste	TFS8X12X8ALCRCW	TFS9X12X9ALCRCW	TFS1X12X1ALCRCW	TFS1X14X1ALCRCW
Liner Only Flat Wall 2000mm High 3 sided White	LB8X12X8FW3S2M	LB9X12X9FW3S2M	LB1X12X1FW3S2M	LB1X14X1ALCRCW
Door / Return Pack 2000mm High Silva Left Hand Opening Door	D1200SILH2M	D1200SILH2M	D1200SILH2M	D1400LH2M
Door / Return Pack 2000mm High Silva Right Hand Opening Door	D1200SIRH2M	D1200SIRH2M	D1200SIRH2M	D1400RH2M
Door / Return Pack 2000mm High Black Left Hand Opening Door	D1200BLLH2M	D1200BLLH2M	D1200BLLH2M	D1400BLLH2M
Door / Return Pack 2000mm High Black Right Hand Opening Door	D1200BLRH2M	D1200BLRH2M	D1200BLRH2M	D1400BLRH2M

WARRANTY INFORMATION

All bathroomware products supplied by Fibre Systems carry our Quality Assurance and Product Warranty. We use the highest quality materials available and manufacture these in accordance with New Zealand specifications and requirements to ensure that all products are fit for the intended purpose for which they are designed. Our customers peace of mind is of paramount importance to us.

Warranty Periods

Baths	10 years
Showers	10 years
Shower Screens and Doors	10 years
Black Coatings	5 years
Easy Clean Wastes	7 years

Warranty Exclusions

The product must be installed according to the instructions supplied.
The water supply temperature applied to the product must not exceed 55 degrees Celsius.
Commercial applications are restricted to a 2 year warranty on all products.



CLEANING AND MAINTENANCE

Bathroom products are used often and the following is our suggestion on how to clean and care for them.

Shower Wall

We use Durosan premium quality sanitaryware grade Acrylic. It is, by design, very robust and chemical resistant. A soft damp cloth with non-abrasive cleaners should be used. Use only non-abrasive cleaners that are recommended for acrylic products.

Shower Tray and Bath

We manufacture our Shower Trays and Baths using a Solid Acrylic Surface. Most other shower trays are manufactured using a veneer acrylic surface. The great advantage is that small scratches can be removed easily by using fine cutting compound. Again, the same basic cleaning methods as the wall are recommended.

Shower Doors and Glass

All glass is compliant to AS/NZS 2208. We suggest that the glass surfaces are wiped down or squeegeed following use to remove excess water. For best results use a trusted glass cleaner.

Metal Framework

Should be cleaned using a soft damp cloth with non-abrasive cleaner. Note that on round showers, the bottom rollers are easy release for ease of cleaning. If chemical spray cleaners are used, avoid direct contact with the rollers and guides and ensure the shower is rinsed off to avoid residue build up.

Weather Seals and Drip Strips

Can be removed if required for cleaning, and can be replaced when they no longer look their best. Refer to the spare parts and accessories section of our website for more details.

Note - If the Glass has been treated follow specific cleaning instructions from the system provider.