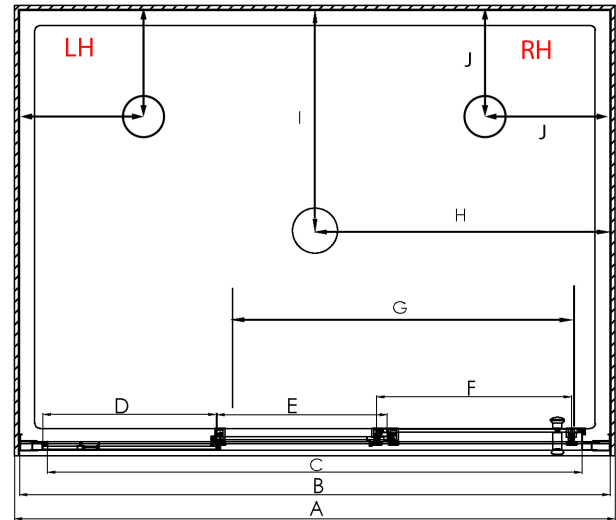


SQUARE ALCOVE STACKER DOOR SHOWERS



Pictured above - Stellar 900 x 900 3 sided alcove flat wall silva
SKU 248574



DESCRIPTION

The Stellar square alcove range of showers can be purchased as a complete shower cubicle including acrylic tray, wall LIner and door pack.

The door pack and tray can also be purchased as individual items for installation on a tiled floor and/or tiled wall.

FEATURES

- Low profile tray with 40mm upstand
- 1950mm high glass
- Total OVERALL height 2020mm
- Removeable drip strip and gutter
- 3 panel sliding door - silva finish with adjustable rollers
- Magnetic strip on closing edge of door
- Auto glide sliding door feature
- Polished quality metal chrome handle, inner & outer
- Door is reversible and can open left to right or right to left

LEGEND

Dimension	Description		
		900mm	1000mm
A	Tray external dimension	900mm	1000mm
B	Door frame outer dimension (including receivers)	875mm	975mm
C	Door frame inner dimension	768mm	868mm
D	Fixed glass panel width	246mm	280mm
E	Centre sliding panel width	240mm	273mm
F	Outer sliding panel width	289mm	322mm
G	Overall door opening width	417mm	484mm
H	Waste position from outside of tray (centre waste)	450mm	500mm
I	Waste position from outside of tray (centre waste)	450mm	500mm
J	Waste position from outside of tray (corner waste)	250mm	n/a

ORDERING CODES

Product Description	900mm	1000mm
Square Alcove 3 Sided Flat Wall Silva 3 Panel Sliding Stacker Door	248574	248579
Square Alcove 3 Sided Moulded Back Wall Silva 3 Panel Sliding Stacker Door	248576	248581
Additional code for Corner Waste Tray (specify LH or RH)	319880	N/A
Flat Alcove Tray Centre Waste Only	TFS9X9ALCCW	TFS1000ALCCW
Flat Alcove Tray LH Corner Waste Only	TFS9X9ALCLHCNR	N/A
Flat Alcove Tray RH Corner Waste Only	TFS9X9ALCRHCNR	N/A
Flat Alcove Wall Liner Only White 1950mm High	LB9X9X9FW3S195	LB1X1X1FW3S195
Moulded Back Wall Wall Liner Only White 1950mm High	LB9X9X9MW3S195	LB1X1X1MW3S195
3 Panel Sliding Stacker Door Only Silva 1950mm High	119545	119546

WARRANTY INFORMATION

All bathroomware products supplied by Fibre Systems carry our Quality Assurance and Product Warranty. We use the highest quality materials available and manufacture these in accordance with New Zealand specifications and requirements to ensure that all products are fit for the intended purpose for which they are designed. Our customer's peace of mind is of paramount importance to us.

Warranty Periods

Baths	10 years
Showers	10 years
Shower Screens and Doors	10 years
Silva and White Coatings	10 years
E-Line + Squareline + Dezine Showers	5 years
Black Coatings	5 years
Aquaknight Easy Clean Wastes	7 years
Accessories	2 years



Warranty Exclusions

The product must be installed according to the instructions supplied.
The water supply temperature applied to the product must not exceed 55 degrees Celsius.
All cleaning and cleaning products must be in accordance with our cleaning instructions and guidance.
Commercial Applications (where products are installed in a building where occupancy is via a commercial arrangement i.e. a rental property, hotel, hostel etc) are restricted to a 2 year warranty on all products.

CLEANING AND MAINTENANCE

Please refer to our cleaning instructions document for guidance, available on our website